

# DEXIS Scan eXam™

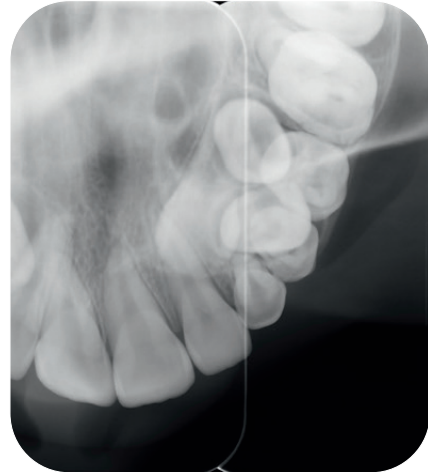
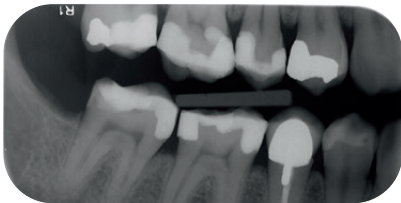
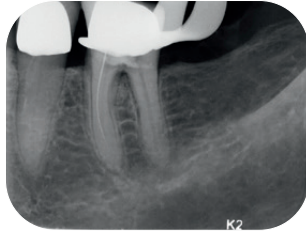
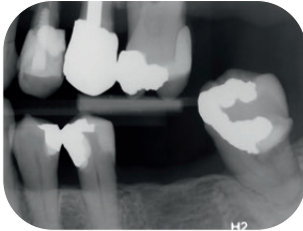
Fast, direct and ingeniously digital



# Dexis combines Dental Excellence with outstanding imaging expertise

Scanning resolution 17 lp/mm. Image bit depth 16 bit.

Occlusal 4C image



## Size 0

22 x 31 mm  
734 x 1034 Pixel  
1.08 MB

## Size 1

24 x 40 mm  
800 x 1334 Pixel  
1.53 MB

## Size 2

31 x 41 mm  
1034 x 1368 Pixel  
2.03 MB

## Size 3

27 x 54 mm  
900 x 1800 Pixel  
2.32 MB



SUPERIOR IMAGE QUALITY



CLINICALLY PROVEN PERFORMANCE



EXCELLENT COMFORT

# Accurate and consistent diagnostic results

## Clinical image quality

The Scan eXam imaging plate system consistently provides images with high details and excellent contrast. The wide dynamic range associated with the imaging plate ensures that the best possible diagnostic representation is achieved every time. With its fast image processing, the system adapts really well to an efficient practice workflow.

## Professional software solutions

The DEXIS Scan eXam scanner comes with imaging software specifically developed for demanding use at practices. Efficient imaging tools enable professional image optimisation, while the excellent interoperability supports connections with other software applications or a DICOM environment.



# Excellence in productivity

## Excellent results extremely fast

The Scan eXam device sets the standard in terms of image availability. The entire process from reading to erasing is quick enough to ensure a rapid workflow with no waiting time, even when several plates are being fed in. Imaging

plates provide you with superior image quality and support a wide range of applications. The wide dynamic range of the plate compensates over or underexposure, which really helps pick out diagnostic information.

The system is compatible with both AC and DC X-ray tubes and delivers excellent clinical imaging results of consistent quality.



Plates	Seconds
Size 0	5
Size 1	6
Size 2	6
Size 3	8

## An investment you can rely on

### A cost-efficient system

The system communicates via the local area network and is not restricted to one dedicated PC as USB-connected systems are. This high degree of flexibility means one Scan eXam scanner can be used at the same time at up to 8 workstations. This represents a very cost-effective imaging solution for practices with multiple users and imaging devices.

### Consistent hygiene

A comprehensive hygiene system, based on single-use protective covers, plate protection, and contact-free infeed of plates prevents plates and the surface of the device becoming contaminated. The patented UV disinfection system that inactivates viruses and bacteria on the plate transport mechanism, thereby also preventing any cross-contamination. This ensures total hygiene.

### The benefit of our experience

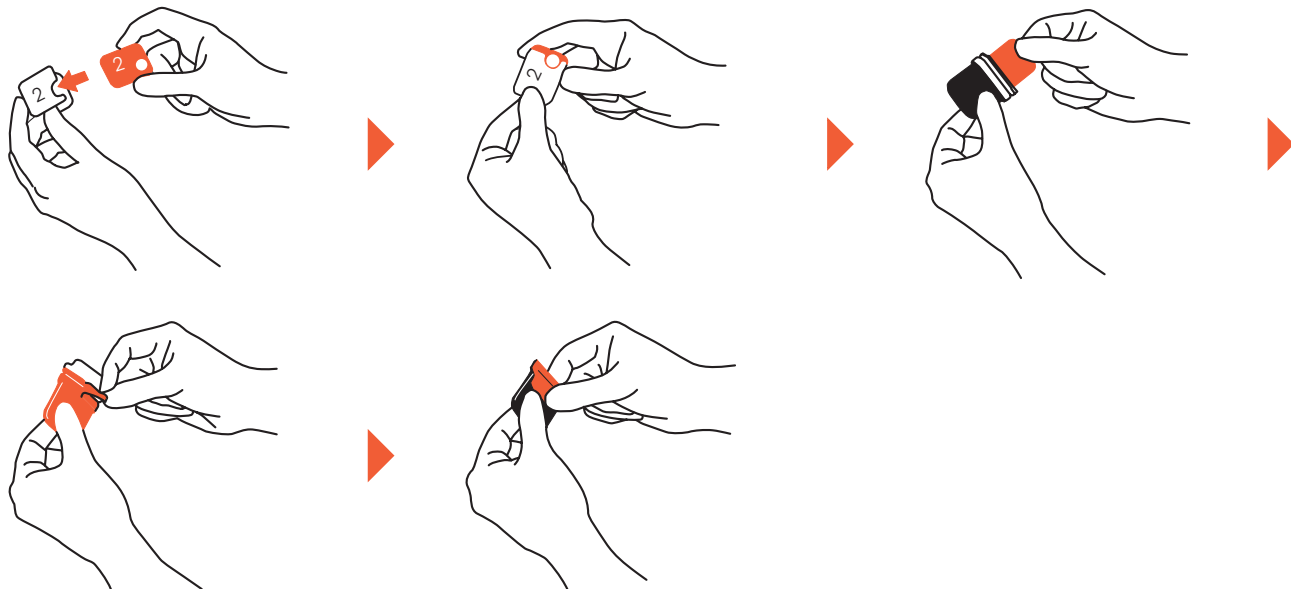
Like all DEXIS products, the DEXIS Scan eXam system has been designed with great attention to detail. This means image results of very high diagnostic quality can be achieved for a long time to come.

## Familiar, easy and hygienic handling

The Scan eXam scanner wakes up from stand-by mode and can be operated without touching the system. This workflow with single use hygiene accessories provides safe operation with minimised risk of cross-contamination.

Additionally the Scan eXam imaging plate system has an integrated, automatic UV cleaning system (patented) to maximise safety for the user and patients. There is no need to disassemble and clean the unit regularly.

## As easy to position as film



## UV disinfection system

The Scan eXam system introduces a smart and automated internal ultraviolet (UV) disinfection feature that inactivates viruses and bacteria on the plate transport mechanism.

UV radiation is known to eliminate at least 99.9% of viruses and bacteria, providing for example germicidal safety against:

- HIV
- Hepatitis A/B/C
- *Corynebacterium diphtheriae*
- *Mycobacterium tuberculosis*
- Herpes

# Easy integration

## Flexible set-up in offices

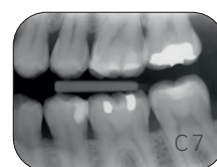
The Scan eXam imaging plate system is highly compact and can be installed on or under a desk or in a cabinet — or even mounted on a wall.

## Scratch-resistant imaging plates

The Scan eXam device uses the very latest imaging plate technology. The imaging plates have a highly scratch-resistant surface, ensuring high-quality diagnostic results with every use over a long period of time.

## Patented iDOT™ system

Check the quality of your imaging plates with the unique iDOT marking system. iDOT marking can be seen on each image taken, making it possible to identify plates where quality is declining. Damaged plates can be replaced immediately.



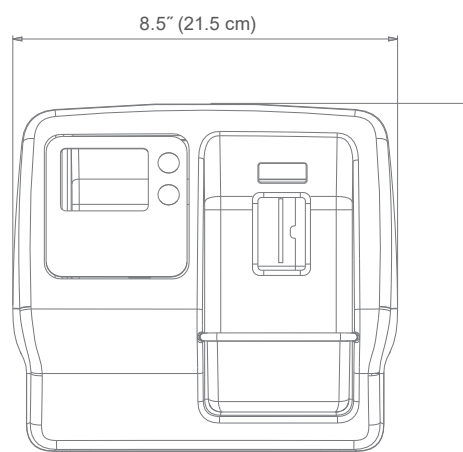
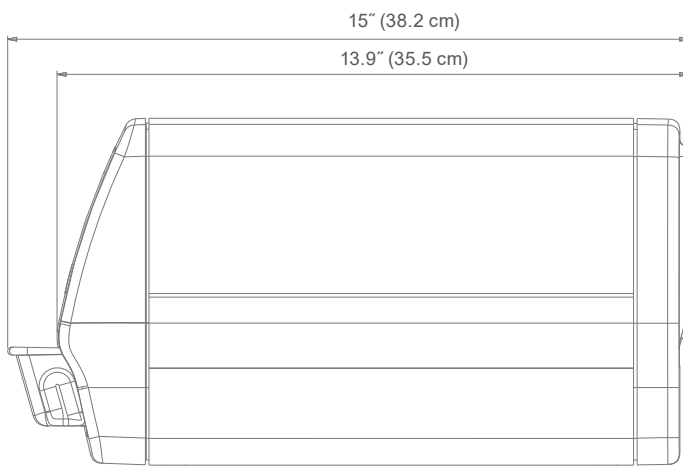
# One Scan eXam device can be easily shared by up to 8 operatories over a local network.



# Technical specifications

Technology	Reuseable imaging plate (Photo Stimulable Phosphor plate)
Pixel size	30 $\mu\text{m}$ (Super resolution) 60 $\mu\text{m}$ (High resolution)
Scanning resolution	17 line pairs / mm
Image bit depth	16 bit
Readout time	5 – 8.8 seconds
Connection	Standard network connection (Ethernet RJ45), DHCP
Dimensions (H x W x D)	196 mm x 215 mm x 382 mm (7.7 x 8.5 x 15 inches)
Weight	10.3 kg (22.7 lbs)
Operating voltage	100 – 240 V, 50/60 Hz
Operating current	Less than 1.3 A
Operating environment	+10°C – +40°C, 30 – 90 RH%, 700 – 1060 hPa

## Dimensions



# **Transforming Practices and Patient Smiles**

**Designed with ease-of-use for all clinicians in mind, DEXIS now offers dependable and consistent imaging solutions that provide vital information to support accurate diagnosis and predictable treatment planning.**



**PaloDEx Group Oy** Nahkelantie 160, FI-04300 Tuusula, Finland