



PerFect[®] TCS II
Tissue Contouring System

Clinically Superior Results and Increased Productivity

- Exceptional cutting precision
- Stops bleeding quickly
- Fast healing

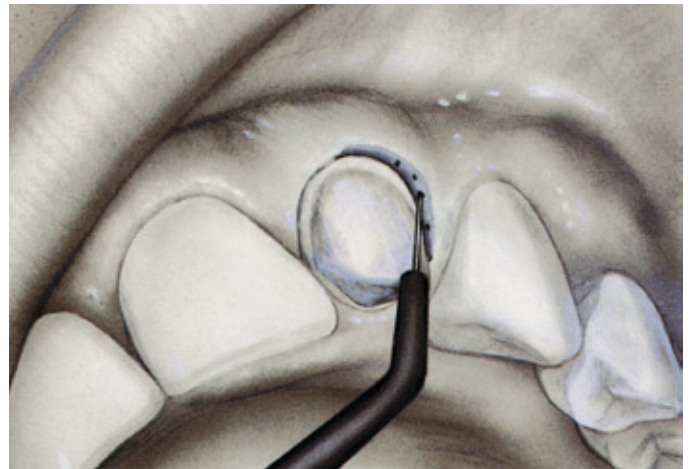
How to make everyday procedures simpler and clinically superior

PerFect® TCS II, a high frequency electro-surgery system, helps manage soft tissue with greater efficiency, greater precision and less bleeding than the common dental scalpel

- ▼ Removes unwanted tissue with ease
- ▼ Reduces chair time by simplifying operative procedures and maintaining hemostasis
- ▼ Provides outstanding cutting precision for superior clinical and aesthetic results
- ▼ Allows uneventful healing

Other clinical applications:

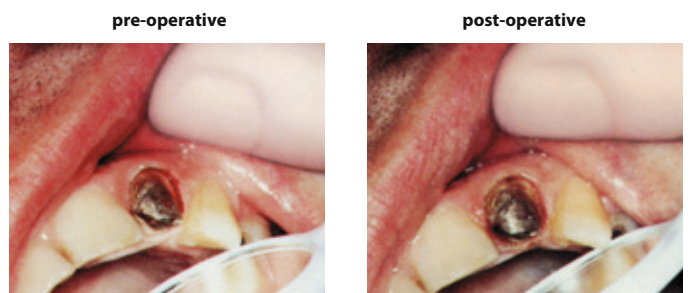
- ▼ Widening gingival sulcus
- ▼ Crown lengthening
- ▼ Exposing impacted teeth
- ▼ Incising abscesses
- ▼ Removing hyperplastic gingiva
- ▼ Frenectomy
- ▼ Stops bleeding



Using the Straight Knife electrode to stop bleeding in gingival sulcus

Control bleeding with a touch of the electrode

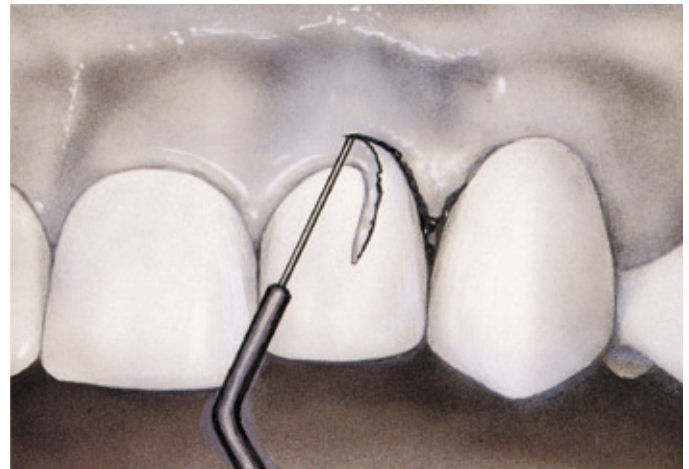
- ▼ PerFect TCS II quickly stops bleeding caused by tooth preparation or cord placement with just a few dabs of the electrode
- ▼ The procedure continues without delay – no more waiting or extra appointments



Coagulation in gingival trough



Using the Long Loop electrode to remove occluding gingiva



Using the Straight Knife electrode to restore gingival symmetry

Gain access to caries quickly and efficiently

- ▼ With PerFect TCS II, you can quickly remove gingival tissue occluding carious lesions
- ▼ Restorations – even with composites – may begin immediately because the operative field is blood-free

Contour tissue with unparalleled precision

- ▼ With PerFect TCS II, you can shave fine, “paper-thin” layers of tissue even in hard to reach areas
- ▼ Facilitate impression taking, cementation, and aesthetic procedures by removing redundant tissue with little or no bleeding

pre-operative



post-operative



Subgingival access and visibility

pre-operative



post-operative



Aesthetic contouring of gingiva

PerFect® TCS II

Tissue Contouring System

PerFect® TCS II

The state-of-the-art electrosurgical system for precise and efficient tissue contouring

Solid state circuitry eliminates warm-up time

Single control for easy mode selection and intensity adjustment

Waterproof footswitch for hands-free electrode activation

Swivel cord connector improves handling

Dispersive electrode completes energy flow path



8 pcs. Autoclavable electrode sheaths

Ordering Information

PerFect® TCS II	230V
Cat. No.	S8230CE
	S8230UK

Included Components	Qty.
PerFect TCS II Unit 230V	1
Cord Assembly S6008CE	1
Electrode Set S7010A (S6011A, S6012A, S6015A)	3
Dispersive Electrode S213	1
Footswitch assembly S5006	1
Handpiece Holder S7001	1
Introductory DVD	1
Step-by-step Owner's Guide	1

Cat. No.	Electrode Sheaths	Qty.
S6010A	Complete Set S6011A thru S6018A	8
S7010A	Included Set S6011A, S6012A, S6015A	3
S6011A	Coag Ball	2
S6012A	45° Straight Knife	2
S6013A	45° Tapered Knife	2
S6014A	Straight Round Loop	2
S6015A	45° Long Loop	2
S6016A	Straight Long Loop	2
S6017A	45° Diamond Loop	2
S6018A	90° AP 1½	2

Technical Data

Measure: 108 × 159 × 222 mm

Weight: 2.4 kg

Coltène/Whaledent AG
Feldwiesenstr. 20
9450 Altstätten/Switzerland
Tel. + 41 71 757 53 00
Fax + 41 71 757 53 01
info.ch@coltene.com

Coltène/Whaledent Inc.
235 Ascot Parkway
Cuyahoga Falls,
Ohio 44223/USA
Tel. + 1 330 916 8800
Fax + 1 330 916 7077
info.us@coltene.com

Coltène/Whaledent Ltd.
The President Suite
Kendal House, Victoria Way
Burgess Hill, West Sussex
RH15 9NF / UK
Tel +44 1444 235486
Fax +44 1444 870640
info.uk@coltene.com

© 2013 Coltène/Whaledent AG – www.coltene.com

 **COLTENE®**